



RESIDENCE  
**MONTE CARLO**

**5P-801**

5 Pièces / 5 Rooms

3 Chambres / 3 Bedrooms

Surface intérieure / Living area: 228 m<sup>2</sup>

Surface extérieure / Exterior area: 53 m<sup>2</sup>

Surface totale / Total area: 281 m<sup>2</sup>

Conciergerie 24h sur 24 / 24/7 concierge

Parking / Parking

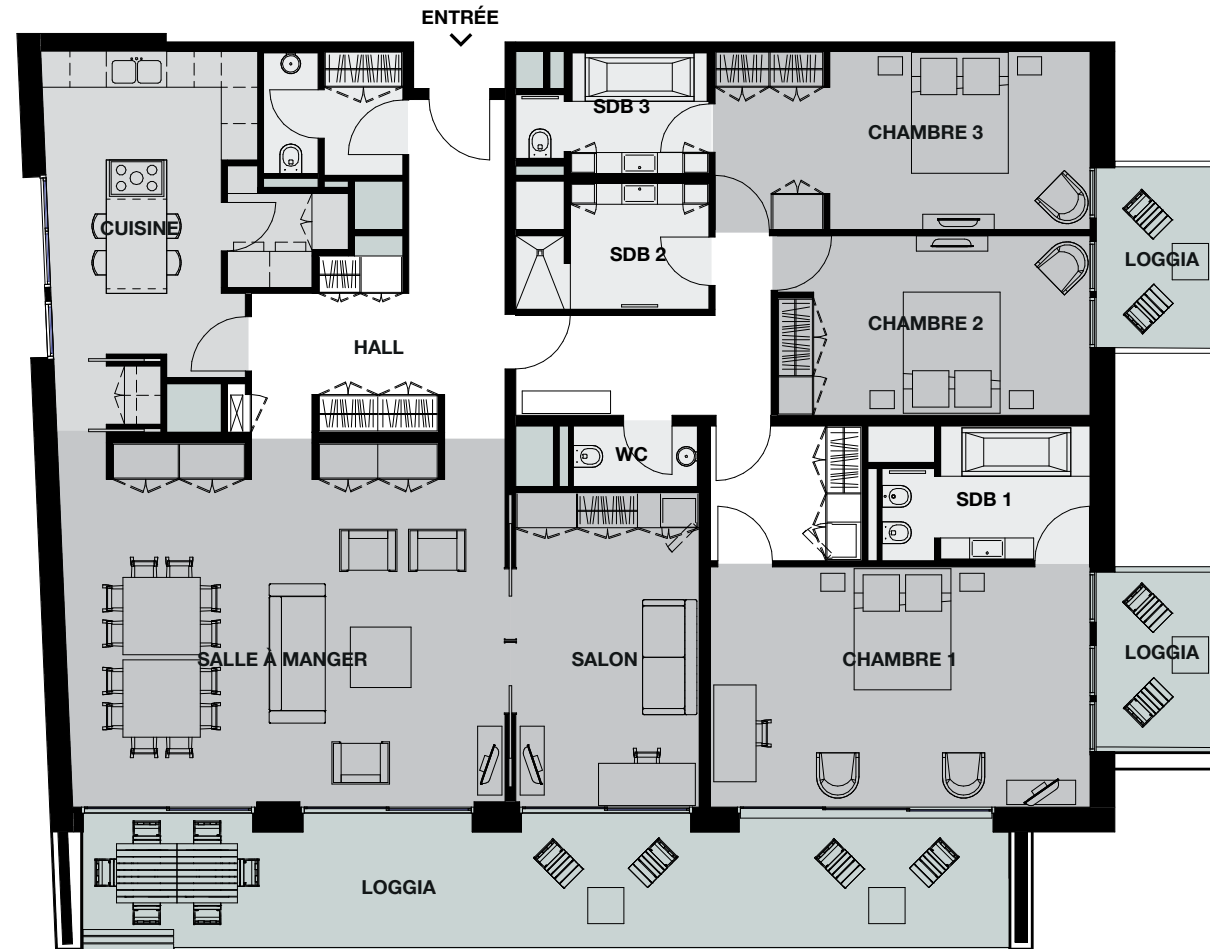
Cave / Cellar

Localisation / Location

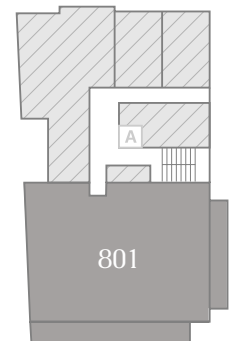
16 boulevard Princesse Charlotte  
98000 Monaco

AGENT EXCLUSIF  
SOLE AGENT

Centre Immobilier Pastor  
+377 92 16 58 88  
info@cip.mc www.cip.mc



Boulevard Princesse Charlotte



Boulevard de Suisse

Échelle : 1cm représente 1 mètre  
Scale: 1cm represents 1 meter

